



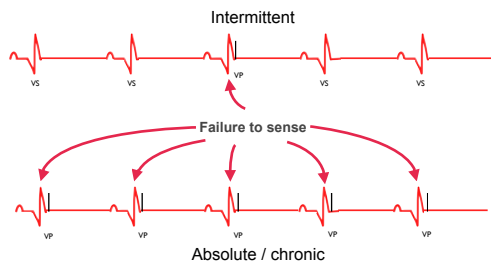
Common pacemaker problems and resolutions

Undersensing

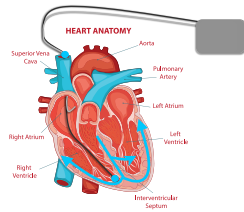
Undersensing

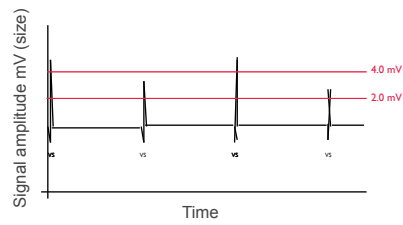


The pacemaker fails to register depolarization of a chamber.



On an ECG & an electrogram



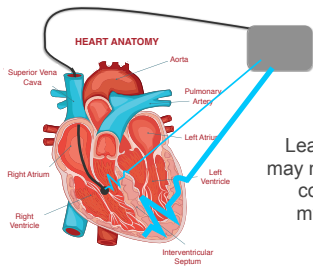


Pacemaker not sensitive enough

The Bigger problems

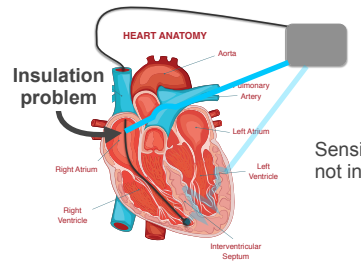


- Lead displacement
- Lead insulation break
- Lead fracture



Lead electrode may not have good contact with myocardium

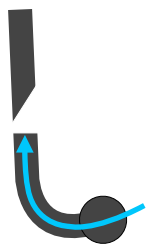
Lead displacement



Insulation problem

Sensing circuit may not involve the right tissue

Insulation breaks



The signal never arrives at the pacemaker

Lead fracture

Takeaway message



Undersensing can often be resolved by making the pacemaker **more sensitive**. However a faulty lead will need to be **replaced** or **repositioned**
